



Macerator Pump 02 Series

Features & Benefits

Dual Blade and Housing
 Seamless Shell Design
 Thermally Protected Motor
 High Quality Efficient Motor
 Run Dry Capability

Typical Applications

RV & Campers
 Boats & Mobile Kitchenware
 Industrial
 Marine

PUMP

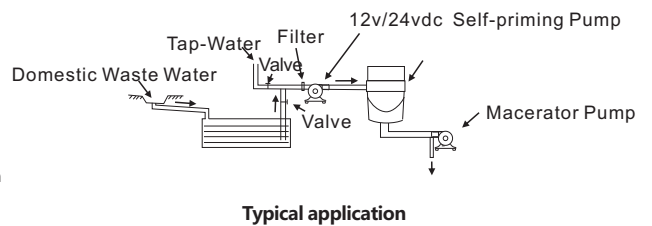
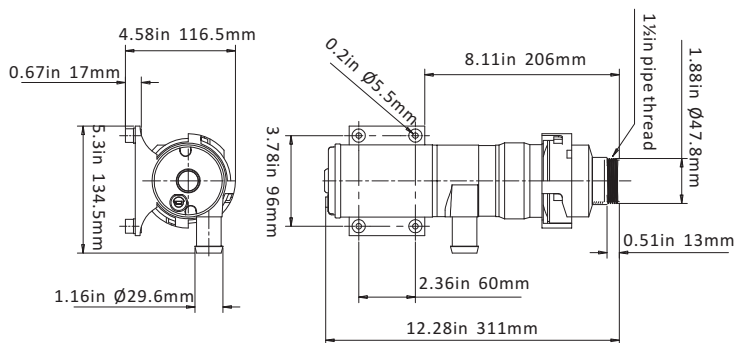
Liquid Temperature
 140°F (60°C) Max.
Priming Capabilities
 Not needed flooded suction
Power
 12 amps max current draw
Max Pressure
 Not needed
Inlet/Outlet Ports
 Inlet: 1-1/2" MNPT
 Outlet: 1" Hose Barb
Weight
 4.9 lbs (2.24 kg)

MOTOR

Type
 High quality seamless design
 that is thermally protected
Leads
 Wire leads
Temperature Limits
 140°F (60°C) Max.
Duty Cycle
 Intermittent
Voltage
 12v/24v



Impeller
 (3.1") 80 mm



STANDARD PUMP CONFIGURATIONS

Model	GPM/LPM	Dimensions	Impeller	Ports	Lead	Molded	Voltage	Max Draw(A)
SFMP1-120-02	12/45.0	13.98" x 5.24" x 4.33" 355 x 133 x 110mm	Rubber & copper	1-1/2" MNPT 1" Hose Barb	Yes	N/A	12v	12.0
SFMP2-120-02	12/45.0	13.98" x 5.24" x 4.33" 355 x 133 x 110mm	Rubber & copper	1-1/2" MNPT 1" Hose Barb	Yes	N/A	24v	7.0